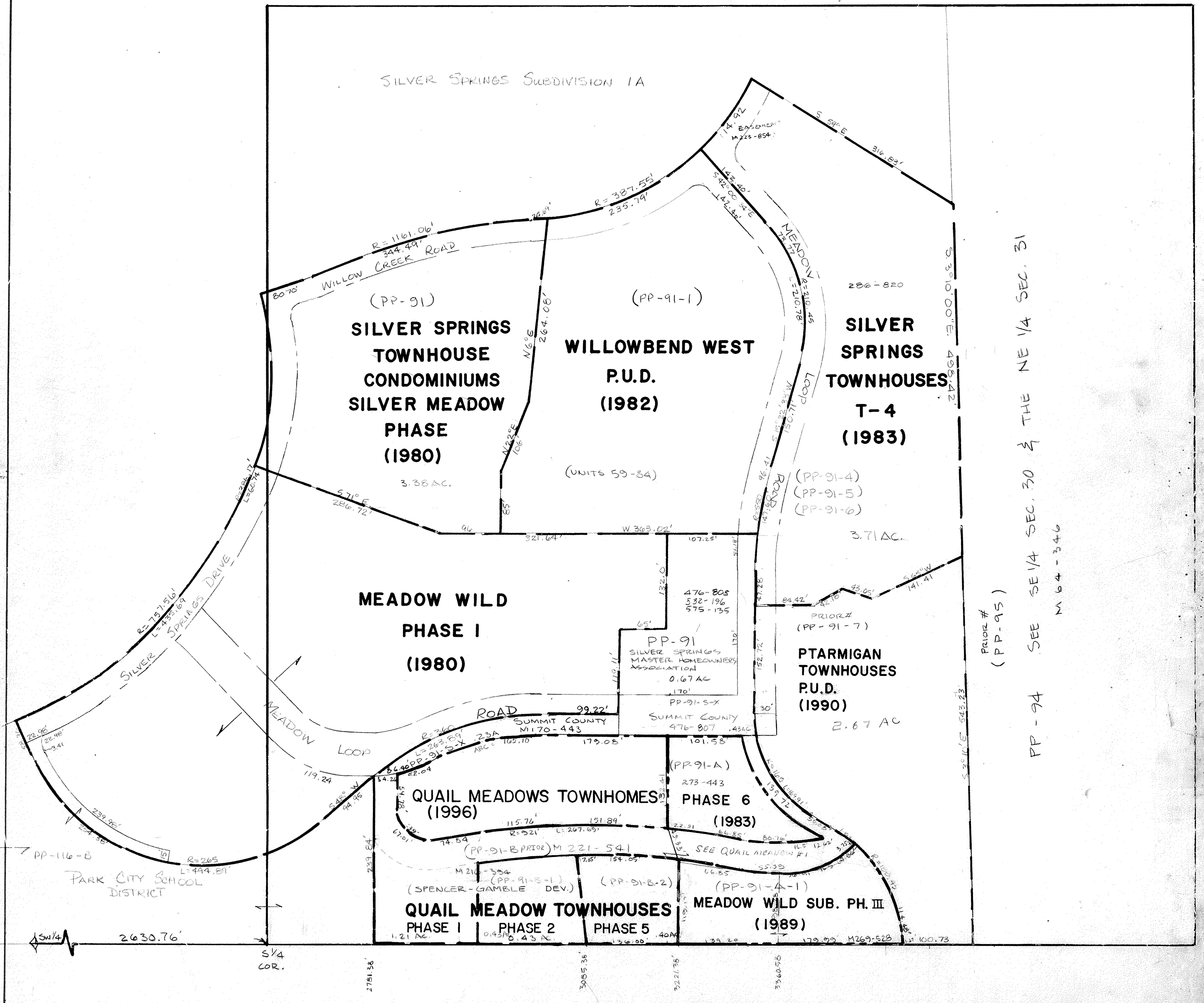


SW 1/4 SE 1/4 SECTION 30
 T 1 S. - R. 4 E.
 SALT LAKE BASE & MERIDIAN
 SCALE



Approved	REVISIONS - DATE AND INITIAL	(In Pencil)
Utah State Tax Comm		
Date	By	

SUMMIT COUNTY, UTAH

SCALE
 ONE INCH = 100 FEET
 BOOK PAGE